



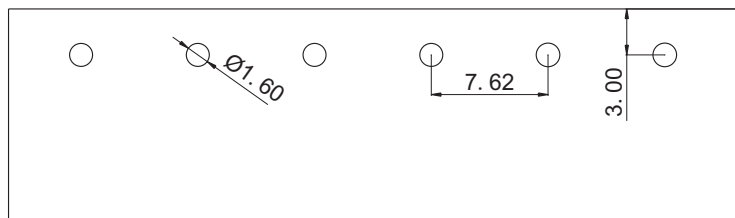
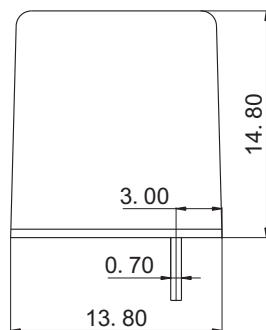
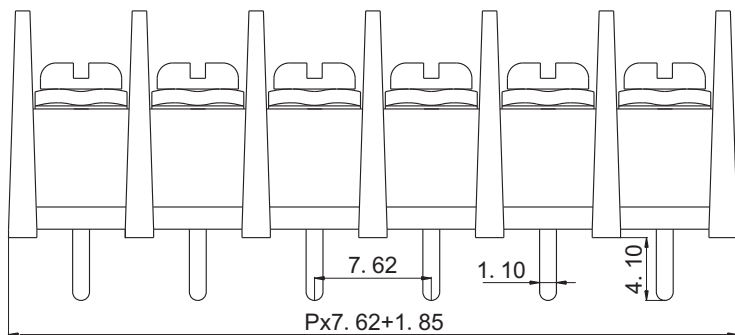
# 慈溪市科发电子有限公司

## CIXI KEFA ELECTRONICS CO., LTD.

产品规格书

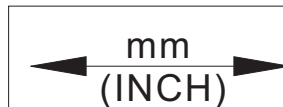
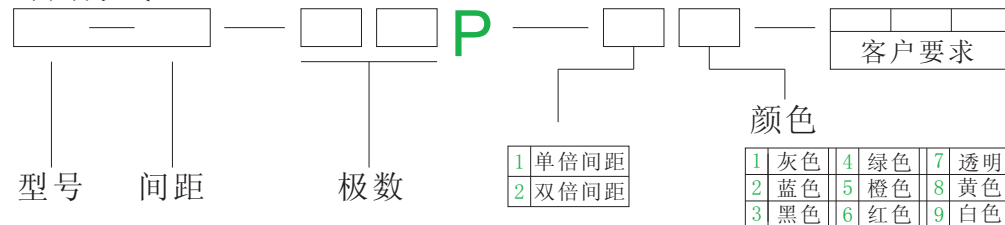


KF25S-7.62



<b>认证</b>		
<b>电气性能</b>		
<b>参考标准</b>	UL	IEC
<b>额定电压</b>	300V	250V
<b>额定电流</b>	20A	24A
<b>使用线径</b>	22-12 AWG	2.5mm <sup>2</sup>
<b>耐电压</b>	AC2000V/1Min	
<b>机械性能</b>		
<b>扭力距</b>	8.0Kg.cm	
<b>温度范围</b>	-40℃—+105℃	
<b>尺寸</b>		
<b>间距</b>	7.62mm	
<b>极数</b>	2P-24P	
<b>材质及电镀</b>		
<b>塑体</b>	PA66 UL94V-0	
<b>焊针</b>	黄铜 镀锡	
<b>螺丝</b>	M3 钢 镀镍	

订购方式:



慈溪市科发电子有限公司  
CIXI KEFA ELECTRONICS CO., LTD.

**NAME**      KF25S-7.62